

MOTOAMERICA



HEALTH AND SANITATION PLAN

4/19/21

Introduction



To MotoAmerica Teams and Staff

MotoAmerica's safe return to racing has been made possible by the hard work and compliance of all our staff, teams and competitors. As we adjust to the current health protocols, we would like to remind everyone of the great responsibility we all have to each other, our fans and our sport.

Our actions and procedures will not only continue to shape our success in the season, but also the return and success of other motorsports groups and spectator sports in general. The pandemic situation differs between each locality and we must continue to execute a plan that works in all areas.

We believe outdoor road racing to be the safest of spectator sports from a disease containment and mitigation perspective, however, there are key areas that we must continue to be vigilant and maintain safe protocols.

The protocols contained in this plan will give us all the best chance of staying safe and continuing our successful year.

Thank you all for your dedication and compliance.

Niccole Cox
Director of Operations



Risk Assessment



MotoAmerica has conducted a thorough risk assessment to determine areas that require operational changes to limit contact and potential spread.

- ❖ Contact between participants (officials, riders and team members) is low except during registration, technical inspection, tire and fuel services, riders' meetings, grid, hot pit and podium celebrations and autograph sessions. The Health and Sanitation Plan will mitigate these activities and decrease risk possibility.
- ❖ The maximum age of the participants is 65. The event is outdoor and all participants are required to be in good health.
- ❖ The fan viewing areas vastly exceed social distancing requirements.



Risk Assessment



Table 1. Risk mitigation techniques will be implemented to ensure the Hazard Likelihood does not exceed Possible and the Injury and total risk remains Manageable.

Hazard analysis and risk assessment matrix with proposed actions					
HAZARD SEVERITY					
HAZARD LIKELIHOOD	Critical Illness or Injury	Severe Illness or Injury	Moderate Illness or Injury	Minor Impact	Negligible Impact
Very Likely	Requires Control	Requires Control	Requires Control	Manageable	Manageable
Likely	Requires Control	Requires Control	Manageable	Manageable and Tolerable	Tolerable
Possible	Requires Control	Manageable	Manageable and Tolerable	Tolerable	Acceptable
Unlikely	Manageable	Tolerable	Tolerable	Acceptable	Acceptable
Highly Unlikely	Tolerable	Acceptable	Acceptable	Acceptable	Acceptable

Total Capacity of Facility



MotoAmerica has conducted an analysis of the space available and requirements for social distancing.

- ❖ The area requirement for physical distancing is 36 sq. ft per person. Our planned participant quantity is 900 which requires only 32,400 sq. ft of space available in the paddock. The main working area available is over 473,000 sq. ft, allowing for over 13,138 participants and fans to safely distance in the paddock.
- ❖ Market place spectator areas are 307,000 square feet allowing for 8,527 persons to social distance
- ❖ The RV camping area is 112,000 square feet allowing for over 250 camping vehicles to safely distance. The non power area is 220,000 square feet allowing for 500 spaces to social distance.
- ❖ The total attendance possible with social distancing is 35,000 persons per day.



General Action Plan



MotoAmerica has enacted the following General guidelines for the event:

Risk mitigation techniques below are in compliance with the [CDC Mass Gatherings Document](#)

1. MotoAmerica will maintain a primary liability insurance certificate with facility and county as named insured.
2. Facility will be in compliance with the [CDC Cleaning and Disinfecting Your Facility](#) guidelines.
3. MotoAmerica will educate participants and staff by emailing the [COVID-19 PowerPoint](#) presentation.
4. MotoAmerica will distribute [CDC Travel Guidelines](#) to all participants.
5. All teams are professionals and are expected to abide by all [OSHA guidelines for preparing a safe workplace](#).
6. All entrants will fill out a questionnaire asking if they or their credential holders have experienced COVID-19 symptoms or have been in contact with anyone experiencing symptoms or if they have traveled outside the United States within the last 14 days.
7. It is required that all persons will be temperature checked before they enter the facility. Anyone over 100.4 F will not be allowed access to the facility.
8. Operations will reference CAL/OSHA COVID-19 Industry Guidance for Campgrounds, RV Parks and Outdoor recreation <https://files.covid19.ca.gov/pdf/guidance-campgrounds-outdoor-recreation--en.pdf>



General Action Plan



MotoAmerica has enacted the following General guidelines for the event:

8. It is required that all participants to stay home if they are experiencing symptoms.
9. MotoAmerica will provide mandatory COVID-19 prevention training for all participants including proper use of PPE. <https://www.cdc.gov/coronavirus/2019-ncov/downloads/cloth-face-coverings-information.pdf>.
 - Require participants to wear masks when indoors within 6 feet of other persons.
 - Require all persons to maintain 6-foot distancing whenever possible.
 - Require all participants to wear masks when physical distancing is not possible. Face coverings must conform to [CDC guidelines](#). All persons must carry a mask or helmet on them at all times, so that if physical distancing is not possible a mask can be easily applied.
10. [Handwashing instructions](#) are posted in restrooms and at stations. Handwashing stations will be added, including throughout paddock and pit lane areas.
11. Hand sanitizer and antibacterial soap will be provided for all staff.
12. Determine isolation areas suitable for medical evaluation and isolation of symptomatic individuals



General Action Plan



MotoAmerica has enacted the following General guidelines for the event:

14. MotoAmerica staff will be trained to immediately alert medical staff if they or someone they know has a fever, shortness of breath and cough. These persons should be immediately isolated in a previously determined isolation area and asked to wear a mask while waiting for medical staff to arrive and evaluate.
15. Workstations will be sanitized after each use and once every 30 minutes.
16. The communications team will have graphic messages ready to be displayed on the Jumbotron and associated TV screens for COVID-19 prevention and in the event organizers and local health authorities decide to evacuate event.
17. Participants who are unable to maintain six-foot physical distancing due to operational requirements must undergo twice daily temperature checks and disclose any contact with symptomatic individuals. Members of these functional groups must have masks, gloves, hand sanitizer or antibacterial soap available.
 - All functional groups whose working requirements do not allow for social distancing will be required to maintain six-foot physical distancing from members of other functional groups.
18. After the event participants MUST inform MotoAmerica if they test positive for COVID-19.



Specific Action Plan



MotoAmerica has enacted the following specific operational guidelines for the competitors and participants.

1. Front Gate

- All persons will be required to sign a waiver of liability and a COVID-19 waiver electronically before entering the facility. <https://motoamerica.speedwaiver.com/ra1>
- “Stay home if you are sick” COVID-19 prevention and physical distancing signs will be present in this area
- All persons will undergo temperature checks when entering the grounds and no persons with a temperature over 100.3F will be allowed to enter

2. Registration

- Contactless check in of participants including mobile waivers will be implemented.
- Staff members will be behind glass or plexiglass barrier and pass credentials to competitors.
- No competitor will be allowed to pass an item to a staff member. Staff members will use hand sanitizer or wash hands between each participant.
- Temperature checks will be performed on staff members twice daily.
- Workstations will be sanitized every 30 minutes.
- A six-foot social distance will be maintained by staff.
- Participants near registration area will be required to wear a mask and marks placed on the ground must be followed to maintain separation. A handwash station will be available near registration area.
- Signage for masks, COVID-19 prevention and handwashing will be present in this area.

3. Riders Meeting

- Rider’s meetings will be “virtual” requiring no congregation of persons. The virtual meeting will also include physical distancing education and COVID-19 prevention education. All riders or entrants are required to complete the video and knowledge review.



Specific Action Plan



MotoAmerica has enacted the following specific operational guidelines for the competitors and participants.

4. Paddock

- Paddock parking will require 10 feet of space between vehicles to allow for a six-foot distance and a walkway between vehicles.
- Working areas in the main paddock are placed back to back to increase area for social distancing by fans to an extra 80,000 square feet.
- Fans are allowed in the paddock, MotoAmerica will place barriers in high traffic areas to keep fans separated from the teams.
- Cars will be strictly prohibited from the paddock to ensure walkways allow for physical distancing. \$200 fines may be applied to any vehicle not actively occupied.
- Teams are required to wear masks at all times in the paddock unless they are in their own working footprint.

5. Race Control and Timing and Scoring

- Only race control staff and timing and scoring staff may enter either area. No other staff are allowed.
- Others must meet with members of race control or timing/scoring outside or through electronic means
- Workstations must maintain six-foot physical distancing
- Work stations must be sanitized every 30 minutes

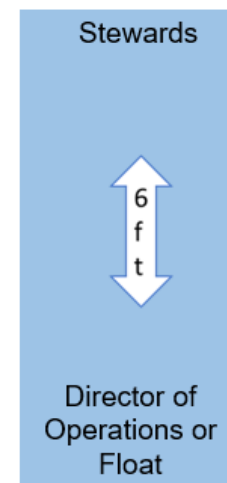
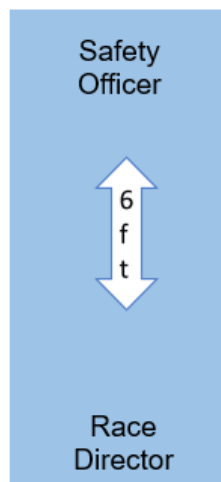
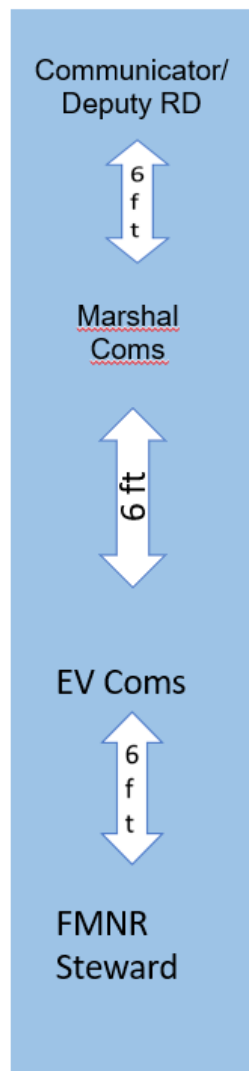
6. MotoAmerica Rider Care Area

- One patient will be allowed in the rider care area at a time
- One medical provider will be present per patient
- Chairs in the waiting area will be placed six feet apart
- All persons will wear masks
- Medical team will change gloves and wash hands and sanitize area after each patient.



Specific Action Plan

Race Control



Specific Action Plan



MotoAmerica has enacted the following specific operational guidelines for the competitors and participants.

7. Technical Inspection

- Technical inspection will only allow two crew members per team at any given time. One person will present the motorcycle with transponder attached and the other will present the riders gear, helmet, belly pan and team radio. Lines will be marked to maintain physical distancing. A tech person will check the gear and equipment outside and once approved the motorcycle will be allowed inside for scrutineering. All staff and competitors will be required to wear masks during technical inspection and queuing for technical inspection.
- Staff will replace gloves, wash hands or use hand sanitizer if any contact is made between the staff member and motorcycle or gear. Crew member should display all items clearly when requested by a technical official.
- Signage for COVID-19 prevention and mask use will be present in this area. A handwash station will be available in this area.
- Post technical inspection will have marks to require physical distancing, each motorcycle will be placed into bays one at a time, and the team members are required to vacate the area immediately. If a team wishes to download data, they must ask permission of the technical control staff after all machines have been placed in parc fermé and only one mechanic at a time will be allowed to perform download. When post inspection is completed each motorcycle will be picked up one at a time.
- If post inspection is held in an indoor area staff and competitors will be required to wear a mask.



Specific Action Plan



MotoAmerica has enacted the following specific operational guidelines for the competitors and participants.

8. Hot Pit

- There will be four hot pit gates, which will be marked to allow social distancing.
- Only crew passes will be allowed on hot pit, and all crew must be wearing crew shirts.
- Masks must be worn at all times on hot pit. Physical distancing and mask signs will be present in this area.
- Teams must either launch motorcycles from the paddock or bring them to the hot pit after their session has begun. Teams may not pre-stage motorcycles in the hot pit and must exit the hot pit immediately after their session has ended. Riders will not be allowed to proceed down hot pit after the checkered flag they will be directed immediately to the paddock or parc fermé depending on the published parc fermé schedule.
- Teams present on the hot pit after the checkered flag or when their session is not on track may be subject to sporting penalties. The only exception is one team member may go to the team's hot pit space to check on or retrieve items if needed. The person should not be working on hot pit, but is allowed for brief periods, examples include, retrieving a tool, checking warmers or generators, etc.

Specific Action Plan



MotoAmerica has enacted the following specific operational guidelines for the competitors and participants.

9. Signaling wall

- Only one member of a team is allowed on the signaling wall. Masks must be worn at all times on the signaling wall.

10. Grid Procedures

- Grid procedures will be modified to a quick start procedure for all classes except Superbike and Supersport when noted and allow only one person to assist the rider to avoid congregation between persons.
- Superbike grid procedure will be a 20 minute procedure, however, all persons must wear masks (except the rider) and only two mechanics will be allowed to attend the rider. One person from each rider's crew may be on the wall to watch the start (with a mask) but all others must be in the teams hot pit space.
- Supersport grid procedure (when noted) will be 15 minutes. all persons must wear masks (except the rider) and only two mechanics will be allowed to attend the rider. One person from each rider's crew may be on the wall to watch the start (with a mask) but all others must be in the teams hot pit space.
- Grid passes will be required to enter grid, they are a sticker that is placed on your lanyard. Superbike and Supersport teams may pick these up from registration



Specific Action Plan



MotoAmerica has enacted the following specific operational guidelines for the competitors and participants.

11. Podium, Rider Interviews and Press Conferences

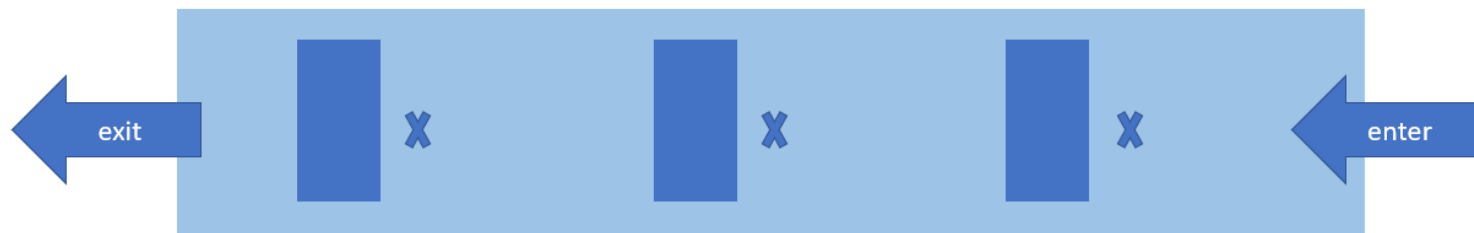
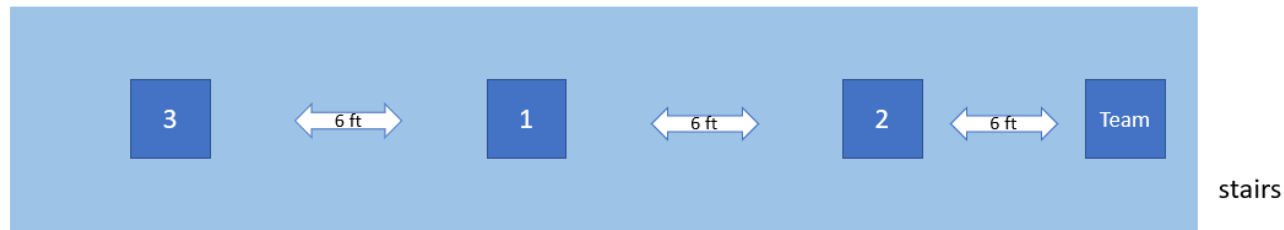
- No persons other than authorized MotoAmerica staff, the top three riders, one team representative for the winner of Superbike and Supersport, and one mechanic per team may enter the podium parc fermé area
- All persons viewing or near the podium must wear a mask. An area for teams wearing masks will be delineated from an area for spectators. Physical distancing signs and mask signs will be present in this area
- The mechanic will be required to wear a mask and allowed to catch the bike from the rider, maintaining a six-foot distance. Once the motorcycle is on the stand the mechanic must leave the area. They may step to an area to the left of the stage to maintain visual custody of the motorcycle. **One person may shade the rider in the interview area, but must wear a mask at all times.**
- The rider will stand by his or her motorcycle on the mark provided and be interviewed via boom mic to maintain physical distancing. Rider will remain on this mark until told to go to the podium.
- Once on the podium riders will pick up sanitized trophy and Dunlop hat for photo opportunity. Champagne will not be provided. All persons should maintain six-foot physical distancing



Specific Action Plan



MotoAmerica has enacted the following specific operational guidelines for the competitors and participants.



Specific Action Plan



MotoAmerica has enacted the following specific operational guidelines for the competitors and participants.

12. Rider Interviews and Press Conferences

- All rider interviews will be conducted using boom mic, physical distancing or using video technology
- Rider press conferences will be held in the “green room” to avoid additional exposure. Only one interviewer and one camera person are allowed in this conference, if six-foot distancing is not achievable persons will be required to wear masks.

13. Press Room

- Only essential media will be allowed
- Media center area has been extended to allow for physical distancing
- Physical distancing signs and mask signs will be present in this area
- All media should avoid in person meetings with riders and schedule electronic conversations. The MotoAmerica staff in the media center can assist with scheduling interviews.



Specific Action Plan



MotoAmerica has enacted the following specific operational guidelines for the competitors and participants.

14. MotoAmerica Staff Hospitality

- No persons will be allowed in hospitality tent except for hospitality staff. There will be a separate area for MotoAmerica owners to meet with space available for physical distancing.
- Coffee and limited individually wrapped snacks will be available in the morning, but persons are required to wash hands before they enter the pick-up area.
- Water and drinks are available and will be stocked by a staff member wearing appropriate PPE.
- If you need to stock an individual's cooler please do not grab from the drink cooler, alert a hospitality staff member.
- If you touch food or drink, it is yours, do not put it back.
- Lunch will be available to go. Groups will be assigned times to eat in the VIP.



Specific Action Plan



MotoAmerica has enacted the following specific operational guidelines for the competitors and participants.

15. MotoAmerica TV compound

- Essential Broadcast staff only will be allowed in the TV Compound.
- Access to the Production trucks will be severely restricted. Only “authorized personnel” will be allowed inside or in proximity of the Mobile Unit. Authorized personnel are those who are deemed to have job duties necessary to ensure a successful production. Non-essential personnel, including family members and friends of personnel, truck tour participants, etc. are not permitted. For employees, technicians, and other personnel operating inside the Mobile Unit, PPE must be worn prior to going up the stairs of the Mobile Unit.
- All personnel associated with each Mobile Unit’s production (GCV staff / client / crew) will be required to “log” their attendance each workday. This will ensure that we will be able to appropriately communicate COVID-19 positive test result information to possibly impacted individuals should that need arise in the future. Each operating entry door will display a QR Code on the entrance. All entrants must scan the QR code one time on a daily basis to ensure proper attendance is being kept a minimum. Daily attendance logs will be monitored and managed through the GCV Schedule Information System.
- All Broadcast Staff will be required to wash hands or use anti-bacterial wipes before entering Production trucks.
- Temperature checks will be performed on Broadcast staff upon arrival daily at the TV Compound.
- In the course of daily business there will need to be access to Timing & Scoring and Race Control. Permission to enter must be given by the MotoAmerica Department heads of each of these areas before entrance. PPE (face masks and gloves) must be worn at all times while within these controlled areas.
- Any Broadcast staff in the field MUST maintain strict social distancing rules interacting with any MotoAmerica staff, Teams or Track staff. PPE must be worn during any interaction.



Specific Action Plan



MotoAmerica has enacted the following specific operational guidelines for the competitors and participants.

16. Dunlop Tire Area

- Only Dunlop staff are allowed under tent or in truck. All staff will be wearing masks and gloves.
- Only one team member is allowed to the reception area, to pick up tires, or to drop off tires.
- Reception area outside tent will include a shield and staff working the reception area will be wearing a mask and gloves. All persons in the reception area and waiting for the reception area will be required to wear masks and marks will be placed on the ground to ensure six-foot distancing.
- Tires will be dropped off outside the tent.
- Participants will be required to follow a fitting schedule to limit the numbers of people dropping off tires.
- When tires are fitted participants will be texted to return to pick up their tires in the pick up area outside the tent. Participants are not permitted to return to the Dunlop tent until they are texted.
- Mask and COVID-19 prevention signage will be present in this area. Handwashing station will be available in this area.

17. VP Fuel Pick Up

- All teams must pre-order fuel using www.motoamericaregistration.com/fuel
- One team member may pick up fuel at a time.
- Each team member must wear a mask during pick up and drop off of drums



Fan Activities



MotoAmerica has enacted the following specific operational guidelines for Fan Activities

18. Pre-Event Communications

- COVID-19 prevention and stay home if you are sick warnings will be sent to each ticket holder.
- Masks will be recommended for all spectators

19. Ticketing

- Online ticket sales will be made available during event.
- QR codes to buy tickets will be placed in lines to encourage contactless sale.
- Guests whose ticket requires a waiver will use an online contactless waiver, or a single sheet of paper per car and a sanitized pen for each use.
- Ticketing staff will be required to be behind a plexiglass or glass barrier or wear a mask or face shield.
- Gloves will be changed after receiving an item from a fan. Staff must use hand sanitizer after receiving an item from a fan in the event that gloves were not used.
- Tamper proof wristbands will not be placed on guests but staff will visualize the band being tightened by the guests.
- Staff will minimize contact with guests to ensure health and safety protocol.
- Ticketing staff must sanitize stations every 30 minutes
- COVID-19 Prevention signage and “stay home if you are sick” signage will be present in this area.
- Fans will not be allowed in the facility without a mask.



Fan Activities



MotoAmerica has enacted the following specific operational guidelines for Fan Activities

20. Vendors

- Vendors will be spaced to allow for social distancing and place marks and signage to encourage social distancing.
- Vendors will be provided hand sanitizer for customers and staff and provided handwashing guidelines.
- Vendors will be asked to sanitize workstations and frequently touched items every 30 minutes.
- Vendors will be encouraged to use contactless payments.
- Vendors will be required to wear a face shield, mask or erect a shield at registers to reduce airborne contact with guests.

21. Autograph sessions

- Autograph sessions have been cancelled to avoid gathering in large groups at times in paddock.



Fan Activities



MotoAmerica has enacted the following specific operational guidelines for Fan Activities

22. Carnival Rides and Games

- Activations will be spaced to allow for social distancing and place marks and signage to encourage social distancing. Only family units will be permitted to be within 6 feet of each other for games or rides.
- Carnival staff will be provided hand sanitizer for customers and staff and provided handwashing guidelines.
- Carnival staff will be asked to sanitize work stations and frequently touched items after each fan interactions. This includes rides and games.
- Carnival staff will be required to wear a face shield or erect a shield at registers to reduce airborne contact with guests.
- Carnival staff will be required to use hand sanitizer, wash hands or wear gloves to pass out prizes.
- Carnival rides may be removed or altered to meet current health standards. Rides will be single person in nature, such as zip lines or rock walls for social distancing.
- Outdoor recreation operators should consult with equipment manufacturers to determine the appropriate disinfection steps, particularly for soft, porous surfaces. Encourage visitors to bring and use their own equipment wherever possible.

23. Stunt Show or Mini Moto

- Stunt shows and mini moto demonstrations will be broadcast on the big screen when possible to encourage remote viewing.
- Signs and marks will be placed to encourage social distancing.
- Handwash stations will be available in these areas.
- Staff will encourage social distancing between family units.
- Show areas will be increased to allow for more social distancing.



Fan Activities



MotoAmerica has enacted the following specific operational guidelines for Fan Activities

24. Fan Camping Areas

- Spaces will be 6 to 10 feet apart.
- Bathrooms will be subject to increased cleaning.
- Additional handwash stations will be made available.
- Social distancing signs will be present in these areas.
- Additional camping square footage will be opened to accommodate social distancing.

25. Fan Viewing Areas

- Additional handwash stations will be made available.
- Social distancing signs will be present in these areas.
- Additional fan viewing areas will be opened to accommodate social distancing.
- Free MotoAmericaLive weekend streaming passwords will be given to all ticket holders to encourage remote viewing within a family unit and discourage congregation around a jumbotron.



Fan Activities



MotoAmerica has enacted the following specific operational guidelines for Fan Activities

26. Fan Hospitality Areas

- Tables will be placed 6 feet apart.
- Food will be served, individually wrapped or behind plexiglass barriers.
- Hand sanitizer will be made available.
- Social distancing signs will be present in these areas.
- Will be required to have a current Health and Safety certificate and comply with all local regulations for food service

27. Fan Concessions

- Concessionaires will be required to have a current Health and Safety certificate and comply with all local regulations for food service.
- Social distancing marks will be required to encourage distancing while waiting in lines.
- Concessionaires will be required to wear a face shield, mask or erect a shield at registers to reduce airborne contact with guests.



After Event Processes



MotoAmerica has enacted the following processes to monitor participants and fans after the event

- ❖ Participant questionnaires will be sent 14 days after the event to ensure no member of a team has tested positive. These responses are mandatory.
- ❖ Fan questionnaires will be sent 14 days after the event to request self reporting of positive test or symptoms. These responses are not mandatory.
- ❖ MotoAmerica will maintain a by-name list of all participants, staff and fans for one year after the event.



CONTACT



CONTACT

Chuck Aksland
Chief Operating Officer
(209) 559-6591
caksland@motoamerica.com

Niccole Cox
Director of Operations
(949) 300-5225
ncox@motoamerica.com

MotoAmerica
A KRAVE Group Company
10084 Sky Park Circle
Irvine, CA 92614
www.motoamerica.com