



MotoAmerica Superbikes at Minnesota

Brainerd International Raceway

July 30th- Aug 1st , 2021

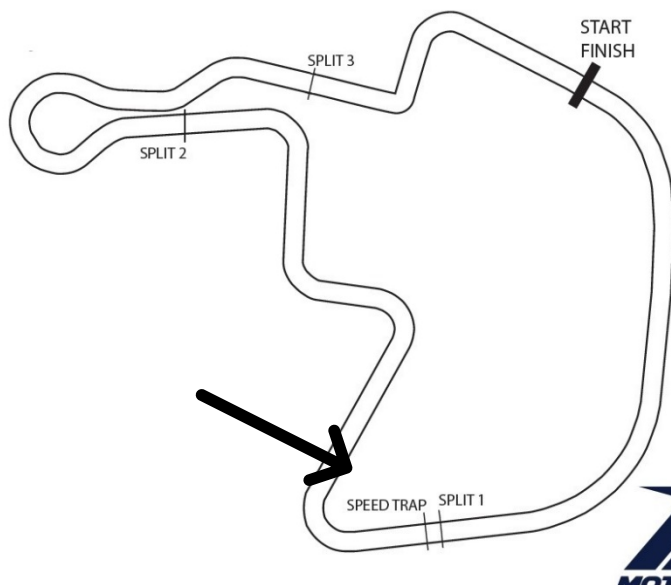
Race Direction Bulletin

Bulletin #1 18:00 29 July 2021

Practice Start Zone

Practice starts may be conducted at the following area:

After turn three on riders right – AFTER taking the Checkered Flag at the end of the session. The zone will be marked by two boards placed trackside



Tunnels

To reduce congestion in the intersection between the paddocks and the bridge we encourage all riders to use the tunnels or push their bikes from the paddock. A map has been provided.

Pit Lane Exit / T13

When leaving the pit lane exit keep to riders left – do not cross the white hatched area. Blend into the racing line after turn 13

Pit Lane Entrance/T8

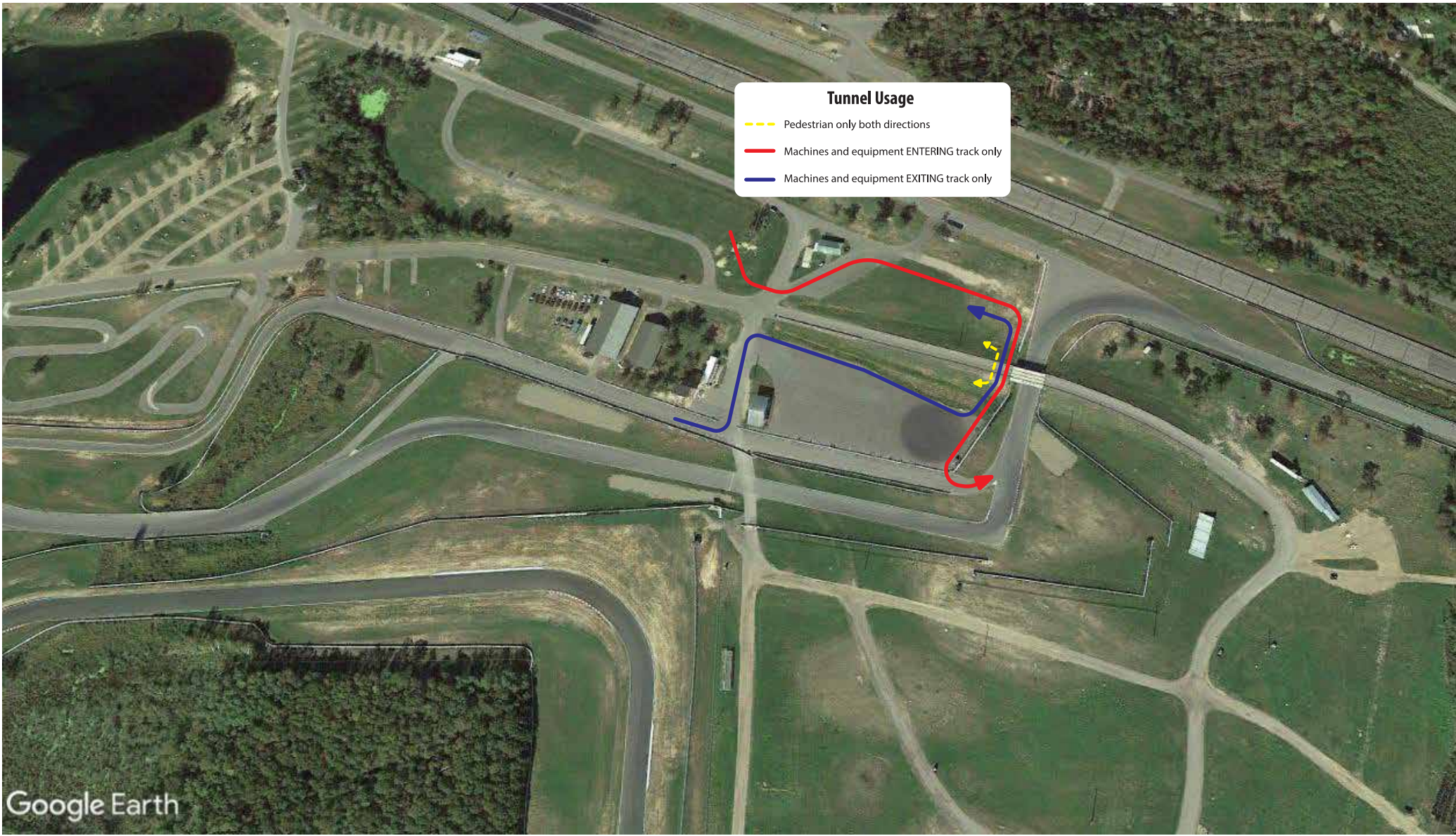
When exiting the track, signal at turn seven stay riders left through turn eight and enter between eight and nine.

Chicane

On every lap, riders must use the chicane. Riders who do not use the chicane in practice and qualifying will have the current lap disallowed. During the race, there will be an instant five second penalty for each infraction. Multiple infractions in practice, qualifying or race may result in further penalty including black flag.

Start Finish

The start finish will not be along the pit lane. Therefore, all classes will feature a quick start. Superbike and Supersport riders are required to be in their hot pit boxes 20 minutes before the start of the race for TV interviews. There is a path to the grid along the tire wall, however, you are not allowed to stop and signal before the catch fence. Only those participating in signaling or those assisting the start (two per team max) may use the access road.



Tunnel Usage

- Pedestrian only both directions
- Machines and equipment ENTERING track only
- Machines and equipment EXITING track only

The Race Direction

Rick Hobbs

(Race Director)

Dan Argano

(FIMNA Safety Officer)

Michael Martin

(MotoAmerica Representative)