



Teams,

Load in will start with Main Paddock Slots at **9am**
Thursday July 27th

**NO VEHICLES OF ANY KIND WILL BE PERMITTED IN THE
PADDOCK UNTIL AFTER LOAD IN IS COMPLETE.**

Towing will be enforced; teams will be fined \$250 for each infraction.

Thank you all for your cooperation, there has been a huge improvement in the number of cars in the paddock. It makes for a much cleaner and professional look.

Any comments, please email jwade@motoamerica.com

STAGING

All teams will stage on the Pro Pad. You may only drop trailers along the perimeter walls. Staging can begin Wednesday.

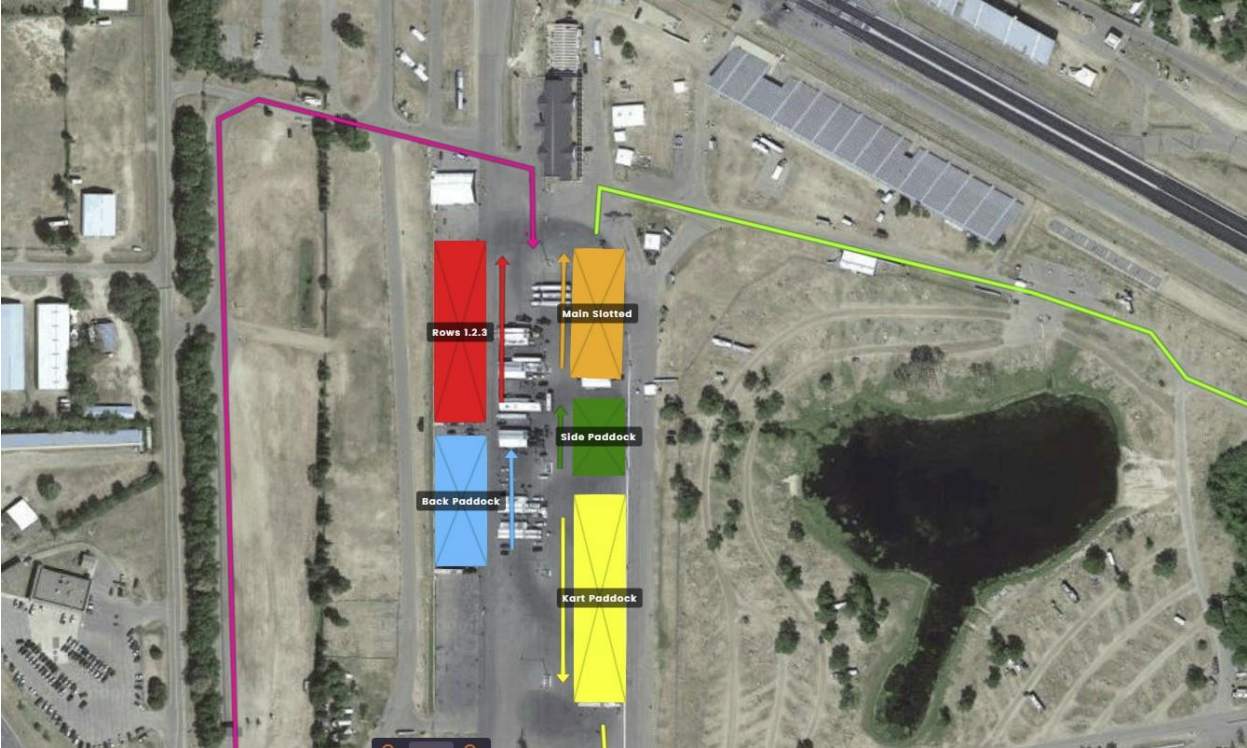
Pink Arrow – entrance from HWY to Pro Pad

Lime Green Arrow is Load IN Path on Thursday

Yellow Arrow – Path Yellow Group will Take at Load In



Each Group is marked by Name/colors and the Direction they should be facing based on Load in sheet below.



LOAD IN ORDER

Main Sloted	
Redline	
Tom Wood	
Legacy	
Nielsen	
AMD	
Badie	
Impact	
Bicknese	
Limitless	
Behmer	
TSE	
Air Onze	
EZ	
BSB	
Cycle Tech	
Steel Com.	
Panda	
Row 1	
N2	30x65
Gilbert	30x100
Shiebe	30x55
Tytlers 2	30x85
Tytlers	30x100
HSBK	35x100
Yamaha	35x100
Row 2	
Westby	35x100
M4	30x100
M4 2	20x100
Disrupt	30x100
ADR	35x100
Thrashed	20x60
Northeast Cycle	25x85
CW Moto	30x65

Row 3	
Altus	38x100
Squid Hunter	30x100
MP13	20x100
Rodio	20x100
Sportbike TG	20x50
3D	25x100
Orange Cat	30x100

Side Paddock	
Indian	
HD	
Vance & Hines	
Saddlemen	

Back Paddock	
Royal Enfield	
Gray Area	
Burke	
DVR	
SWG	
TecFil	
Mad Monkey	
Nowaskey	
Bagger Mayhem	
King Perf.	
Wyman Racing	
Lloyds	
Roland Sands	

KART Paddock	
Davis	
Dirty T	
Privateer	
JJ	
Open Source	
Red Lobo	
The Posse	
Fuel Me	
SMR	
Guffy	
Fernandez	
Monk Moto	
Orlando	
Evansville	
Bad Boys	
Barbour	
Speed Demon	
Schumacher	
Hey Now	
Karns	
Flo4 Law	
Elliott	
Rothenberger	
Hollingsworth	
CQC Powersports	

RV PARKING

RV Parking is on the Pro Pad as marked in the picture below. The whole wall will be open to park against and there are random power boxes along this wall which are First Come, First Serve. Spaces will not be marked. You may park anytime Wednesday PM, as long as you are not obstructing Staged Teams for Load In.

RV Parking
T. Wyman
E. Gendron
J. Lee
S. Salopek
T. Scott
C. Soltisz
T. Westby
J. Hwilka
J. Hwilka
J. Hwilka
J. Hwilka

