



Teams,

*****NEW LOAD IN PROCEEDURE*****

WHEN TEAMS ARE PARKED IN THE PADDOCK, NO TEAMS ARE ALLOWED TO UNLOAD ANY ITEMS UNTIL GIVEN THE ALL CLEAR ON THE TEAM RADIO.

The reason for this is because we are losing a lot of time parking adjacent rows due to teams unloading their equipment and placing in the path of the next row loading in. The approximate wait time after being parked will be 15 minutes.

Laguna Seca 2023 Staging, Load In and Garage/RV assignments are in this document. The load in order and the staging maps are color coded for ease. Teams are broken up into Groups, please stage in your designated color matched area in the fashion showed on the map for quicker load in.

Load in will start with Group 1 at 9am Thursday July 6th

NO VEHICLES OF ANY KIND WILL BE PERMITTED IN THE Paddock UNTIL AFTER THE LOAD IN IS COMPLETE.

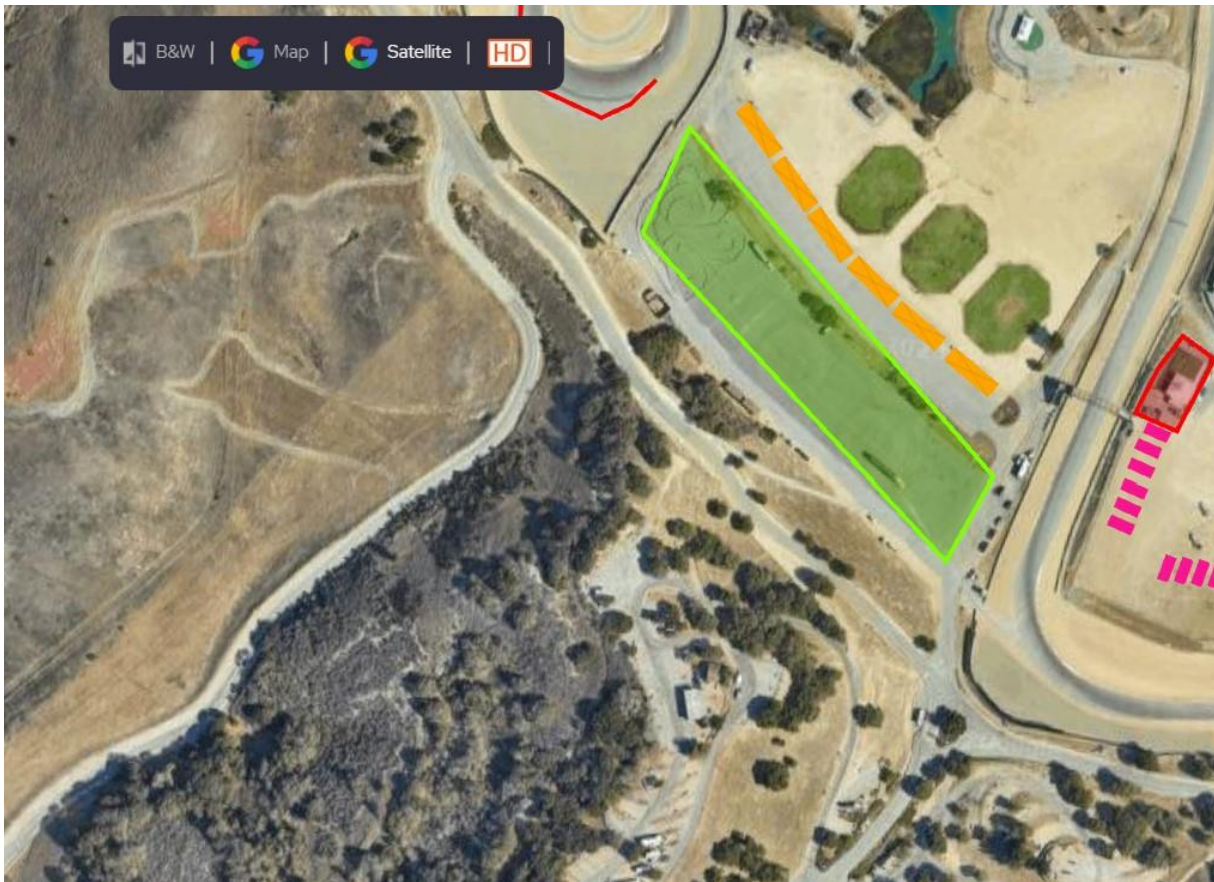
Towing will be enforced; teams will be fined \$250 for each infraction.

Thank you all for your cooperation, there has been a huge improvement on the amount of cars in the paddock. It makes for a much cleaner and professional look.

Any comments, please email jwade@motoamerica.com

STAGING

All teams will stage in the Lakebed. You may only drop trailers along the grass line, and be mindful to not block anyone in.



LOAD IN ORDER

Row 1	DOWN
Yamaha	35x100
Tytlers	30x100
Tytlers 2	30x85
Gilbert	30x100
Squid Hunter	30x100
3D	25x100

Row 2	UP
Westby	35x100
M4	30x100
M4 2	20x100
Shiebe	30x55
Brazil	30x100
MP13	20x100
Blackmon	

Row 3	DOWN
HSBK	35x100
Disrupt	30x100
ADR	35x100
Thrashed	60x20
Northeast Cycle	25x85
Altus	38x100
Cycle Tech	50x30
Bauce	

Row 4	UP
Indian	100x30
HD	100x30
Vance & Hines	100x30
Jiffy Tune	30x55
King Performance	30x55
Bagger Mayhem	30x55

Row 5	DOWN
Nowasky	30x65
Lloyds	30x55
Mad Monkey	20x75
DVR	65x30
Quaid	

Row 6	UP
Rodio	20x100
Legacy	20x55
Top Pro	40x100
Champ School	
Carbon Smith	

ROW 7	
SWG	30x100
Ghetto Customs	20x55

CALL GARAGES	

Triangle	
Duffy	
Ruthless	
Crossman	
Robot Riot	

Extended Paddock
MESA
DiBrino
Shez Racing
Law Dawg
AMD
Ritual
NEW ROW
Vigilante
One Lap
OTW
Paul Mitchell
K Squared
Zone 9
Kings Kamp
Zip Tie

**** If you are listed on this Load In Order, this means you have a Rig or Vehicle that requires paddock space.**

IF, you are sharing with another team and using their paddock space, please email and let me know so that I may free up that space.

GARAGE ASSIGNMENTS

These teams will be called after ROW 7.

Garages	
Energica	20
CBD	19
Saddlemen	18
Saddlemen	17
SMCO	16
Tom Wood	15
Gray Area	14
Gray Area	13
Behmer	12
Honos	11
N2	10
JPH	9
Feel Like A Pro	8
Motocycle Upholstery	7
Fresh Face	6
CW Moto	5
Slow Racing	4
EZ	3
Roland Sands	2
Roland Sands	1

RV ASSIGNMENTS

RV Spaces are dry camping only, no power, no water and will be at entry of the paddock in assigned spaces.

RV Assignments	
1	W. Mitchell
2	D. Anthony
3	C. Soltisz
4	C. Soltisz
5	M. Mercial
6	T Westby
7	M. Paris
8	C. Adams
9	D. Anthony
10	A. Clark
11	S. Cresap
12	J. Crossman
13	A. DiBrino
14	J. Hwilka
15	J. Hwilka
16	J. Hwilka
17	J. Hwilka
18	T. Ivanoff
19	C. Maronian
20	R. Peterson
21	S. Salopek
22	D. Sheldon
23	E. Stahl
24	D. Young
25	K. Horney
26	D. Wall