



Teams,

Load in will start with Group 1 at 9am Thursday  
September 12<sup>th</sup>.

**NO VEHICLES OF ANY KIND WILL BE PERMITTED IN THE  
Paddock UNTIL AFTER THE LOAD IN IS COMPLETE.**

Towing will be enforced; teams will be fined \$250 for each infraction.

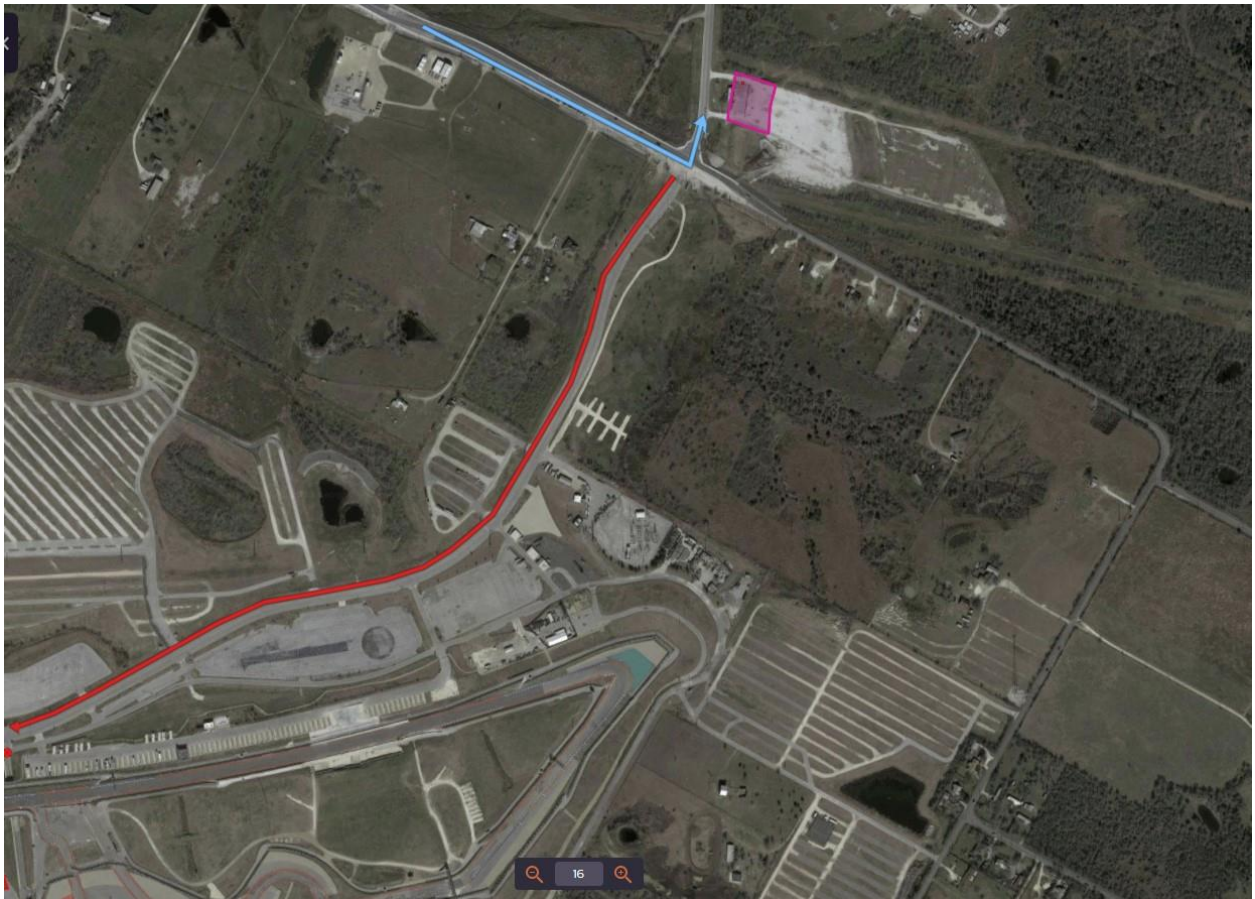
Towing Procedure: Each Morning will send tow truck through paddock with lights on. 30 mins later, we start towing. IF you have a vehicle parked in the paddock, you will be towed.

Do not drill into pavement to secure awnings, you will be fined by the track for repairs.

Questions? please email [jwade@motoamerica.com](mailto:jwade@motoamerica.com)

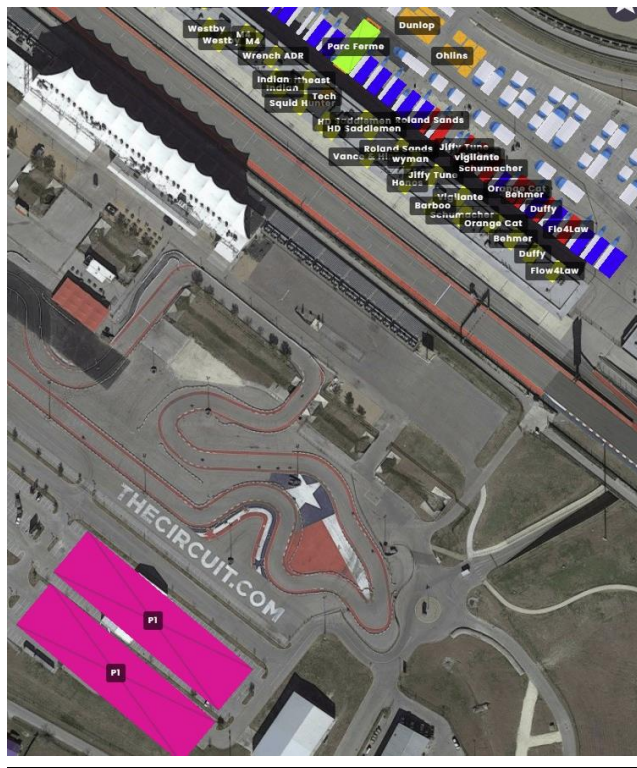
# MA Registration

LOT R off Elroy Rd. at the very  
end of COTA Blvd on right  
indicated by the PINK BOX.



# P1 Parking Location

## 2 Pink boxes in LOT A.



# STAGING

**ALL TEAMS will be staged in the far-right lane along COTA Blvd. against the curb starting at Tunnel 2 and running in a single line all the way down to Elroy Rd.**

**See Red Line Shown Below, Red Circle is Tunnel.**



## LOAD IN ORDER

Group 1		Group 2	Group 3	
King Performance	DROP	Plastic Surgery	Morris/Orange Cat	
OTW	DROP	Team Brazil	Koch	
Northeast	DROP	Super Carl	Moto Moto	
N2		Funded By Wife	789 Racing	
Yamaha		Honos	Handtight racing	
HSBK		Chase Black	Ghetto Customs	
APEX		EZ Racing	Team Pro J's	
M4		Team 42	Pistris	
M4 Hospitality		TRM	Vestment	
Strack		Gaulsser	Chiefs	
Wrench		Shane Maggs	Wreckers 2 Checkers	
Tytlers		Sons	Mobile Chicane	
Tylers 2		Air Onze	Mookie Wilkerson	
Giaccmoto		Edge	Natsukashi garage	
Top Pro		Cycle Pros	NNG Capital	
TECH TRUCK		Jones Honda	DeBoer	
Shiebe		Limitless	BPC	
Rahal Ducati		Zinc AL32	That slow Sporty	
Vance & Hines		Owen Williams	210 Speed Lab	
HD			Bison F14	
3D		Rodio	TCB	
Indian		Team JBJR	Ducati Tampa	
Sportbike T.G.		Ten Racing	LTD	
Saddlemen		Team JBR	PMT	
Roland Sands		Legacy	Organan Group	
Altus		DRC	Ready to Ride	
Thrashed		KingsKamp	Kevin grimel	
Wristin Grigg			Underground Team	
MP13		KWR	Team Orthopedics	
Flow4Law		Mad Monkey	Rebel Racing	
Red Lobo		Kern	Team MIM	
		AJ Peaslee		
		Champ School		
		KTM		
		Comp Werkes		
		Lane Racing		
		Coffee Break		

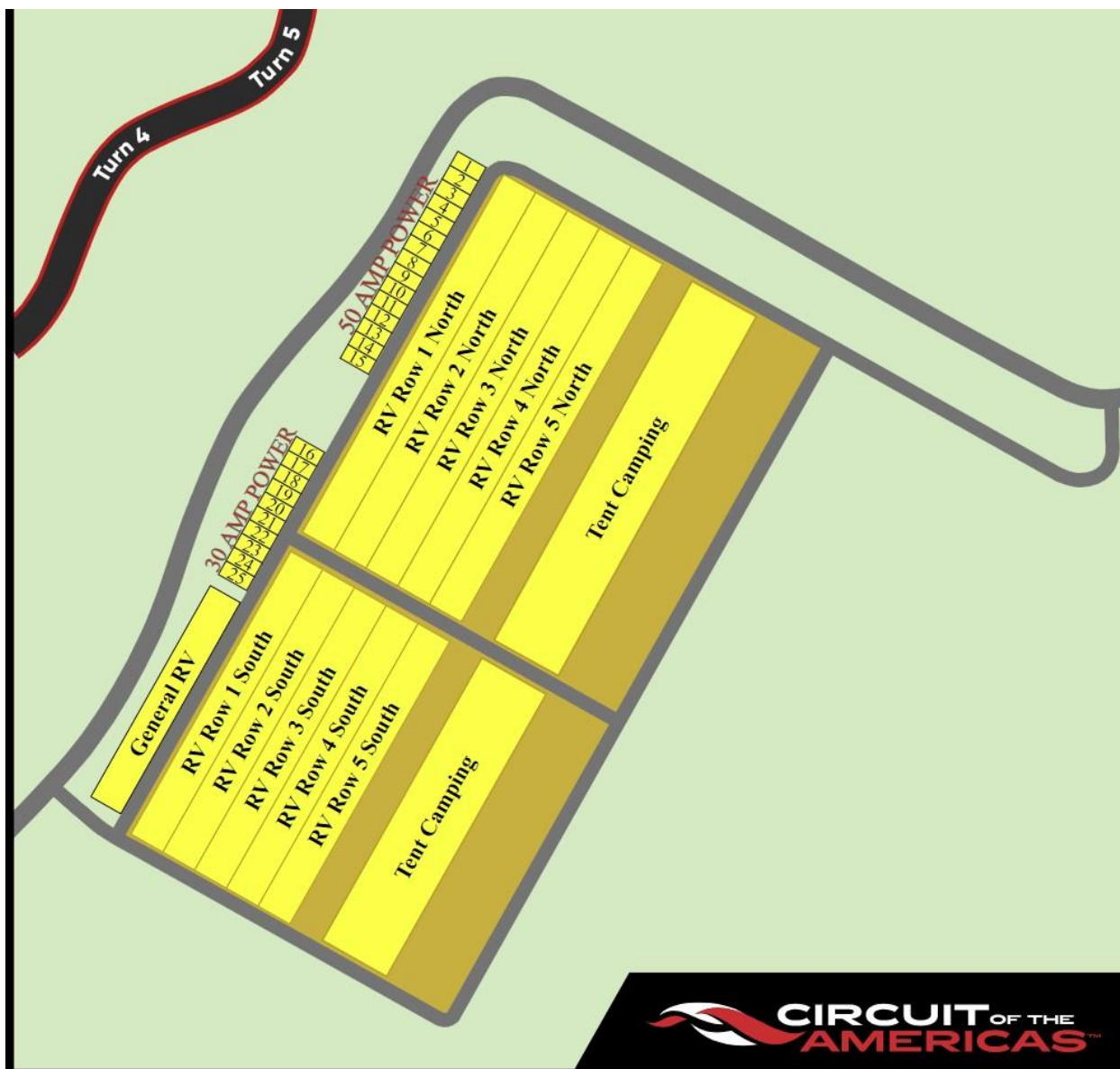
## GARAGE ASSIGNMENTS

Garages	
1	King Performance
2	OTW
3	Northeast
4	N2
5	Yamaha
6	Yamaha
7	HSBK
8	HSBK
9	M4
10	M4
11	Strack
12	Wrench
13	Tytlers
14	Tytlers
15	Tytlers
16	Top Pro
17	Top Pro
18	Top Pro
19	Tech
20	Shiebe
21	Rahal Ducati
22	Vance & Hines
23	HD
24	HD
25	Indian
26	Indian
27	Saddlemen
28	Saddlemen
29	Roland Sands
30	Altus
31	Flow4Law
32	MP13
33	Thrashed
34	Dunlop

## RV ASSIGNMENTS

RV Spaces are dry camping only, no power, no water and First come first serve in the areas labeled "RV Row"

**ALL THE NUMBERS SPACES ARE SOLD OUT.**



**The RED ARROW will take you to CAMPING LOT N from Lot A or Tunnel 1. \*\*NOTE this route has a steep incline.**

**YELLOW ARROW is how to get to LOT N from Hwy 812. You turn left on Elroy Rd and Left at the Sign for LOT N.**

**You can enter COTA LOT N on Google Maps or Apple Maps and it will take you there.**





