



Teams,

Load in will start at 9am Thursday April 11, 2024.

*****LOAD OUT INSTURCTIONS BELOW*****

NO VEHICLES OF ANY KIND WILL BE PERMITTED IN THE PADDOCK AT ANYTIME PER MOTOGP GUIDELINES.

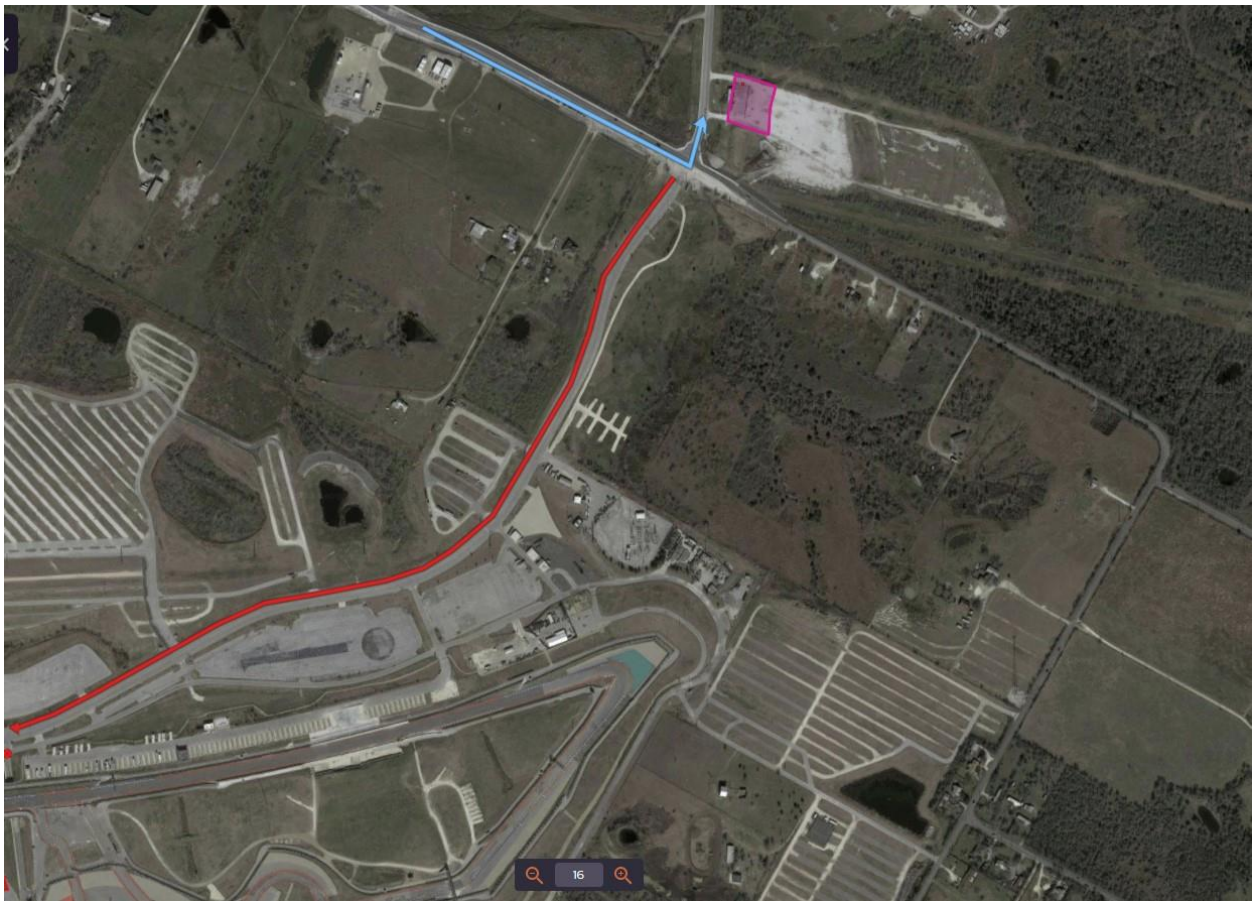
Towing will be enforced and executed by MOTOGP/COTA.

Do not drill into pavement to secure awnings, you will be fined by the track for repairs.

Questions? please email jwade@motoamerica.com

MA Registration

LOT R off Elroy Rd. at the very end of COTA Blvd on the right indicated by the PINK BOX.



P2 Parking Location

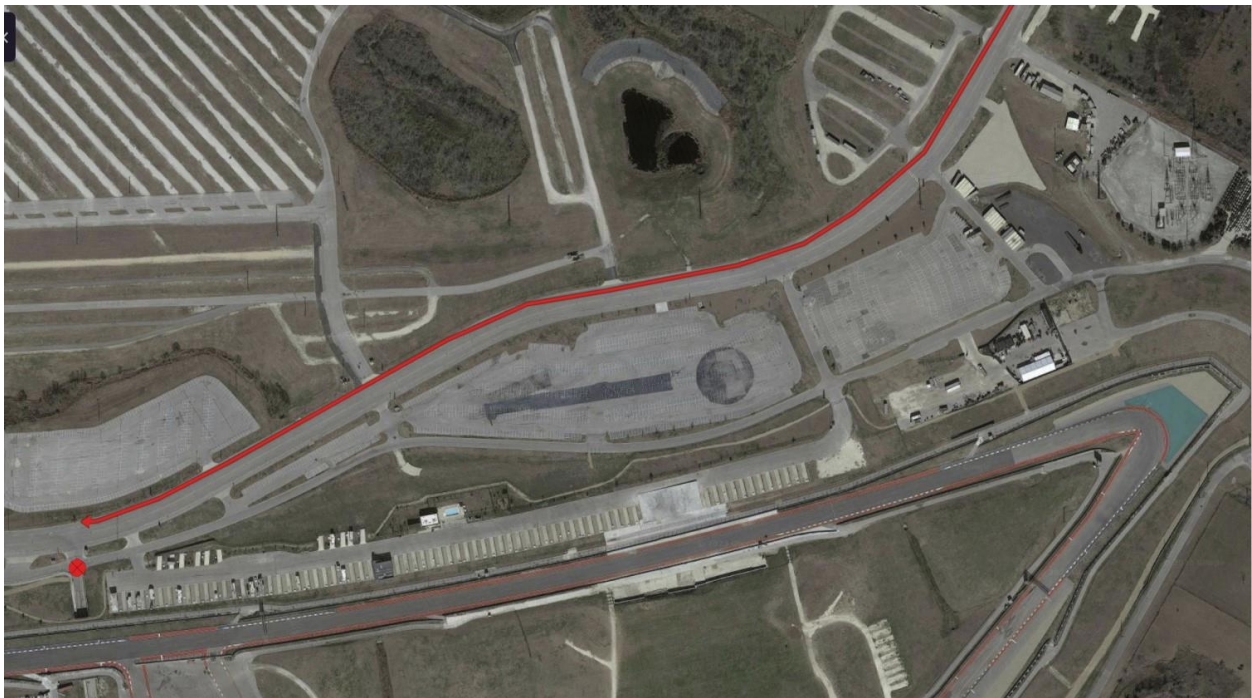
Blue Box Near Turn 1 (trams will be running Friday-Sunday)



STAGING

ALL TEAMS will be staged in the far-right lane along COTA Blvd. against the curb starting at Tunnel 2 and running in a single line all the way down to Elroy Rd.

See Red Line Shown Below, Red Circle is Tunnel.



LOAD IN ORDER

Bagger Teams	
Mad Monkey	
Feuling	
Saddlemen	
Harley Davidson	
Vance & Hines	
Indian	
Roland Sands	
Ryd Fast	

RV Camping

Must contact COTA directly, MA cannot offer any camping of any sort for MotoGP event.

[Available Sites | COTA Camping - Austin, TX \(campspot.com\)](http://campspot.com)

LOAD OUT INSTRUCTIONS

1. After racing is complete on Sunday, all teams will pack up and prepare to leave.
2. We will start LOAD OUT at 5:30pm Sunday.
MOTOGP has given us strict instructions on this procedure.
3. All teams must wait until 5:30pm before moving!

Bagger Teams	
Mad Monkey	
Feuling	
Saddlemen	
Harley Davidson	
Vance & Hines	
Indian	
Roland Sands	
Ryd Fast	