

 **LOAD IN INSTRUCTIONS**

Teams,

The Load In Doc is **PROVISIONAL** and subject to change. Instructions are sent out on average 10 days prior to loading in, to allow teams a window to contact me for any requests.

REMINDER – this year ALL Pickup Trucks pulling trailers (bumper or 5th wheel) **WILL BE DISCONNECTING AND MOVING VEHICLES TO P1 IMMEDIATELY WHEN PARKED.** PLEASE BE PREPARED TO DISCONNECT QUICKLY UPON BEING PARKED.

Rows 3 & 4 will be stacked parking, not nose to tail. Given the number of entries there will be teams parked on the hill on the 3 pads. Load in will start with Row 1, 9 a.m. Thursday April 16th.

LOAD IN ORDER

| <u>Row 1</u> | <u>ON SKID PAD</u> | <u>DOWN EXIT RAMP 3</u> |
|--------------|--------------------|-------------------------|
| 1 | Kramer | |
| 2 | Shane Maggs | |
| 3 | Shiebe | |
| 4 | Saddlemen | |
| 5 | Big Diehl HD | |
| 6 | Harley Davidson | |
| 7 | 3D | |
| 8 | Wrench | |
| 9 | Orange Cat | |
| 10 | Strack | |
| 11 | Jones Honda | |
| 12 | Celtic HSBK | |
| 13 | HSBK Ducati | |
| 14 | | |
| 15 | | |

| <u>Row 3</u> | <u>STAGING ON SKID PAD</u> | <u>DOWN EXIT RAMP 3</u> |
|--------------|----------------------------|-------------------------|
| 1 | Royal Enfield | |
| 2 | Top Pro/Edge | |
| 3 | Team Roberts | |
| 4 | Estensen | |
| 5 | Liberty Yamaha | |
| 6 | Ghetto Customs | DOWN ENTRY RAMP 1 |
| 7 | Speed Demon | DOWN ENTRY RAMP 1 |
| 8 | Chase Black | DOWN ENTRY RAMP 1 |

| <u>Row 2</u> | <u>STAGING ON SKID PAD</u> | <u>DOWN ENTRY RAMP 1</u> |
|--------------|----------------------------|--------------------------|
| 1 | Attack Yamaha | |
| 2 | M4 | |
| 3 | M4 Hospitality | |
| 4 | Rahal Ducati | |
| 5 | Rahal 2 | |
| 6 | Dunlop | |
| 7 | BPR | |
| 8 | Altus | |
| 9 | Thrashed | |
| 10 | MP13 | |
| 11 | Vance & Hines | |
| 12 | SDI | |
| 13 | Rodio Racing | |

| Row 4 | STAGING IN TOWER PADDOCK | DOWN ENTRY RAMP 1 |
|--------------|---------------------------------|--------------------------|
| 1 | Privateer | |
| 2 | Superbike Supply | |
| 3 | Ikonc Racing | |
| 4 | Durbin Racing | |
| 5 | Metronome Racing | |
| 6 | Corrientes Racing | |
| 7 | Limitless Racing | |
| 8 | Vestment Realty | |
| 9 | Cycle Pros | |
| 10 | Astro MAR Performance | |
| 11 | Ducati Pittsburgh | |
| 12 | Black Ice | |
| 13 | EZ Racing | |
| 14 | Team Velocity | |
| 15 | Donut Racing | |
| 16 | JBJR | |
| 17 | Galluser Racing | |
| 18 | Horney Racing | |
| 19 | MonkMoto | |
| 20 | Phison/Pascari | |
| 21 | Rikard racing | |
| 22 | Quarterly Racing | |
| 23 | Rossi Motorsports | |
| 24 | DCR Motion Pro | |
| 25 | Team Hammer | |
| 26 | Bettencourt Racing | |
| 27 | Sawyer Lafayette Racing | |
| 28 | Karns/TST Industries Racing | |
| 29 | Ice Barn | |
| 30 | Kings Kamp.com | |
| 31 | Browntown Racing | |
| 32 | Robem Engineering | |
| 33 | Hoban Brothers | |
| 34 | TAB Performance | |
| 35 | Weyh Racing | |
| 36 | BGB Racing | |
| 37 | Werner Racing | |

| Pad 1 | | BLUE ROAD |
|--------------|--------------------------|------------------|
| 1 | M13 Moto | |
| 2 | Delta Capital Pro | |
| 3 | Team Yo | |
| 4 | ValGo Racing | |
| 5 | 2 Bones Racing | |
| 6 | Alpha Max | |
| 7 | TB Motorsports | |
| 8 | Caron Racing | |
| 9 | | |

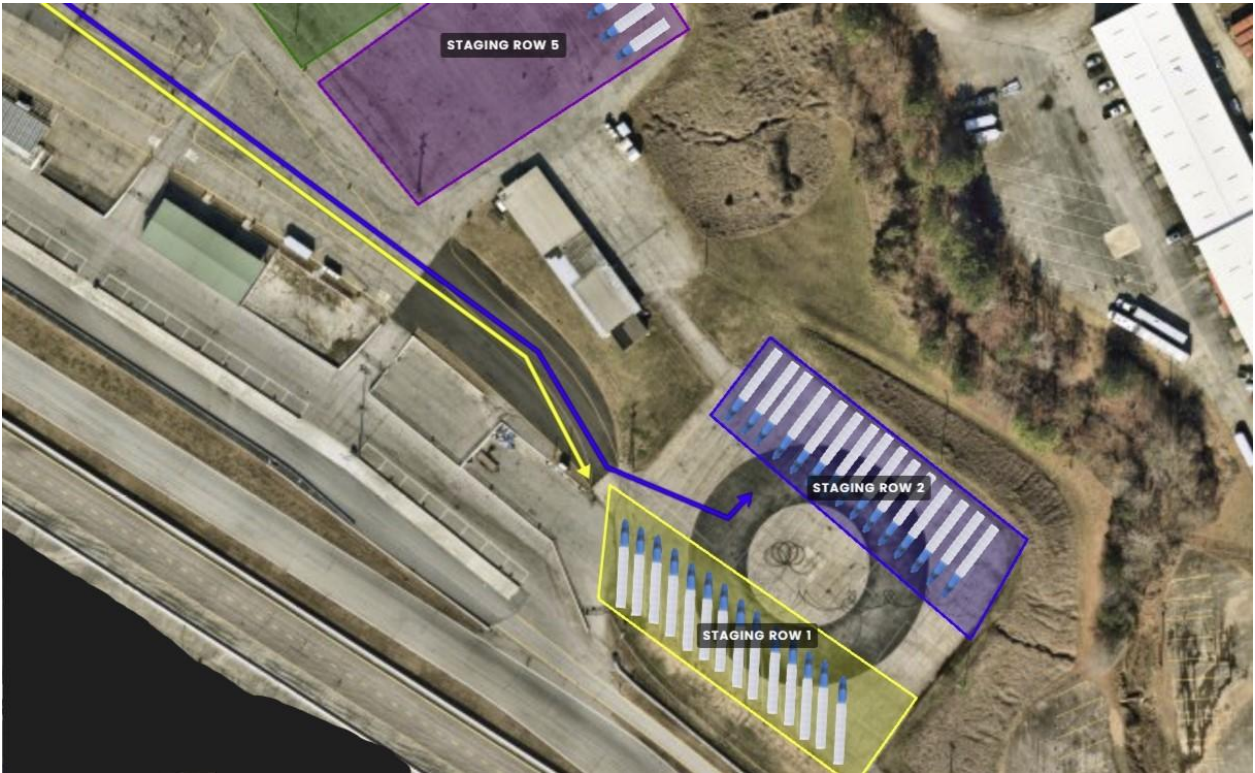
PAD 2 PARKING

| PAD 2 | STAGING ON SKID PAD | BLUE ROAD |
|--------------|---------------------------------------|------------------|
| 1 | Ceparano & Shoefelt Racing | |
| 2 | TCB Racing | |
| 3 | Lejeune Racing | |
| 4 | | |
| 5 | SDM298 | |
| 6 | 40/30 Racing | |
| 7 | Team JBR | |
| 8 | | |
| 9 | | |
| 10 | | |

STAGING INSTRUCTIONS

You are allowed to come in and stage anytime on Wednesday.

Staging for **Row 1** & **Row 2** on SKID PAD
(PARK AS PICTURED)



Staging for **Row 3** **Row 4** **Row 5** in Tower Paddock Area



Staging for PADS 1 & 2 in **ORANGE** Staging Lot in front.
(PARK AS PICTURED)



Load in will start at 9am

ROW 1 will be called first. You will cross over the bridge and turn left on Yellow Ramp 3, **followed by ROW 3** you will come down the same **YELLOW RAMP 3**.



After that we will call ROW 2. You will cross over the bridge and turn left on Red Ramp 1. Next up, we will call Row 4 followed by Row 5 to come down Red Ramp 1.



Pad Parking on Top

*TEAMS IN PICTURE ARE NOT TEAMS ASSIGNED



RV ASSIGNMENTS SHELF PARKING ON PADDOCK SIDE

| Space # | Name |
|---------|--------------------|
| 1 | N.LEWIS |
| 2 | H.GILIM |
| 3 | M.MERICLE |
| 4 | KYLE WYMAN |
| 5 | KIM WYMAN |
| 6 | CARL PRICE |
| 7 | JESSICA STRACK |
| 8 | TOSHA LACKEY |
| 9 | TYLER SCOTT |
| 10 | TIM IVANOFF |
| 11 | SEAN D. KELLY |
| 12 | KENNY ROBERTS |
| 13 | DKIP DOWLING |
| 14 | CHUCK GIACCHETTO |
| 15 | BARRY GILSENAN |
| 16 | GARY COWAN |
| 17 | NATHEN BETTENCOURT |
| 18 | KEVIN HORNEY |

RV SPACES 17/18 is on a slope, leveling will be needed. If you Requested a Power Spot and are not on this list, you will need to purchase a non-powered space for \$100 and park in middle of Support Paddock. Any questions or requests, please contact:

Jason Wade
jwade@motoamerica.com