



## MOTOAMERICA COMPETITOR BULLETIN 01-2025

---

1. MotoAmerica has discontinued the use of the red and white logo. All logos used by competitors on leathers, race transporters, motorcycles and crew shirts should be updated to use the blue and red MotoAmerica logo. The official logos are available for download at: [www.motoamericaregistration.com/competitor-info](http://www.motoamericaregistration.com/competitor-info)
2. Use of the logo guidelines will be mandatory. Competitors should use the stroked blue/red logo on dark backgrounds where the red and white logo was previously used. As a reminder, competitors are required to display the MotoAmerica logo, and Dunlop logo on their leathers and crew shirts as displayed in the following diagrams.
3. Race transporters are also required to display the MotoAmerica logo, team name and sponsors.
4. The AMA/FIMNA logo is required to be displayed on the rider suit.
5. If a series partner is decided, MotoAmerica will issue an amended bulletin.

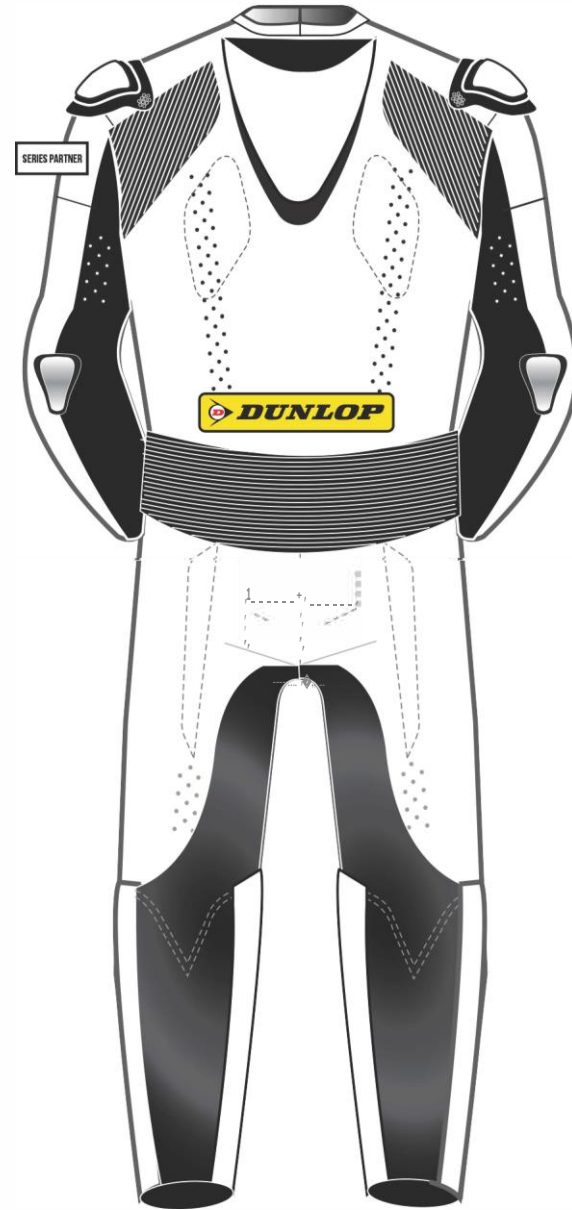
Please contact [ncox@motoamerica.com](mailto:ncox@motoamerica.com) for any questions.



**2025 SEASON**

**COMPETITOR BULLETIN 01-2025**

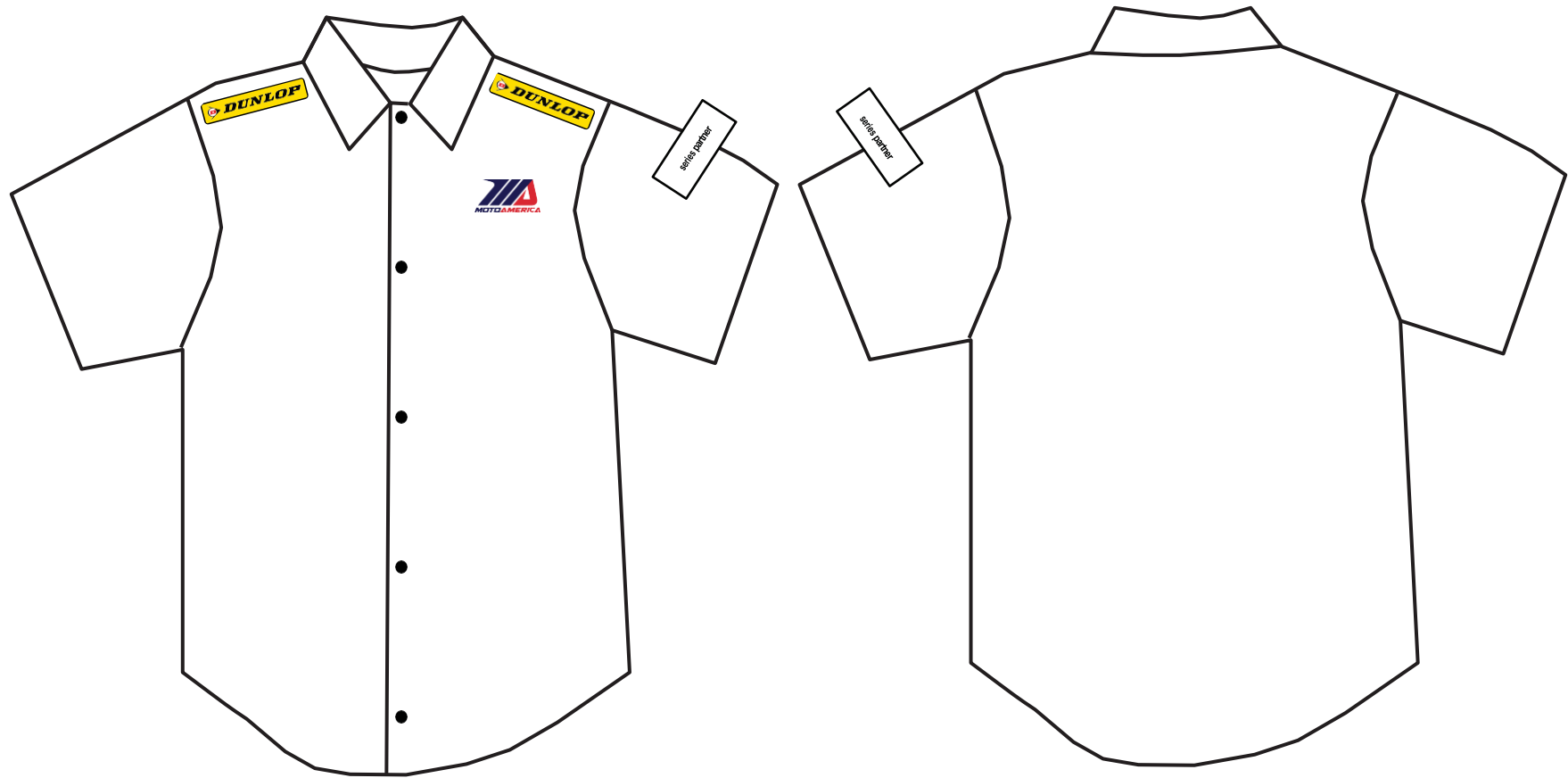
**RIDER SUIT AND CREW SHIRT REQUIREMENTS**



\*THE SERIES PARTNER REQUIREMENTS WILL BE RELEASED IF REQUIRED.  
ALL TEAMS MUST LEAVE THIS SPACE AVAILABLE.

## RIDER SUIT

SERIES PARTNER: 4.5" X 1.7"  
MOTOAMERICA: 4" X 2"  
DUNLOP [FRONT]: 4.82" X 1"  
DUNLOP: 10" X 2.03"  
AMA/FIMNA: 5" X 1.22"



# TEAM SHIRT

LOGOS ARE REQUIRED FOR COMPETITION

SERIES PARTNER \* 4.5" X 1.75"

MOTOAMERICA SERIES LOGO 4" X 2"

DUNLOP (FRONT): 4.82" X 1"

\*THE SERIES PARTNER REQUIREMENTS WILL BE  
RELEASED IF REQUIRED.

ALL TEAMS MUST LEAVE THIS SPACE AVAILABLE.